

# The Galas district

## A church, a monastery and a chapel

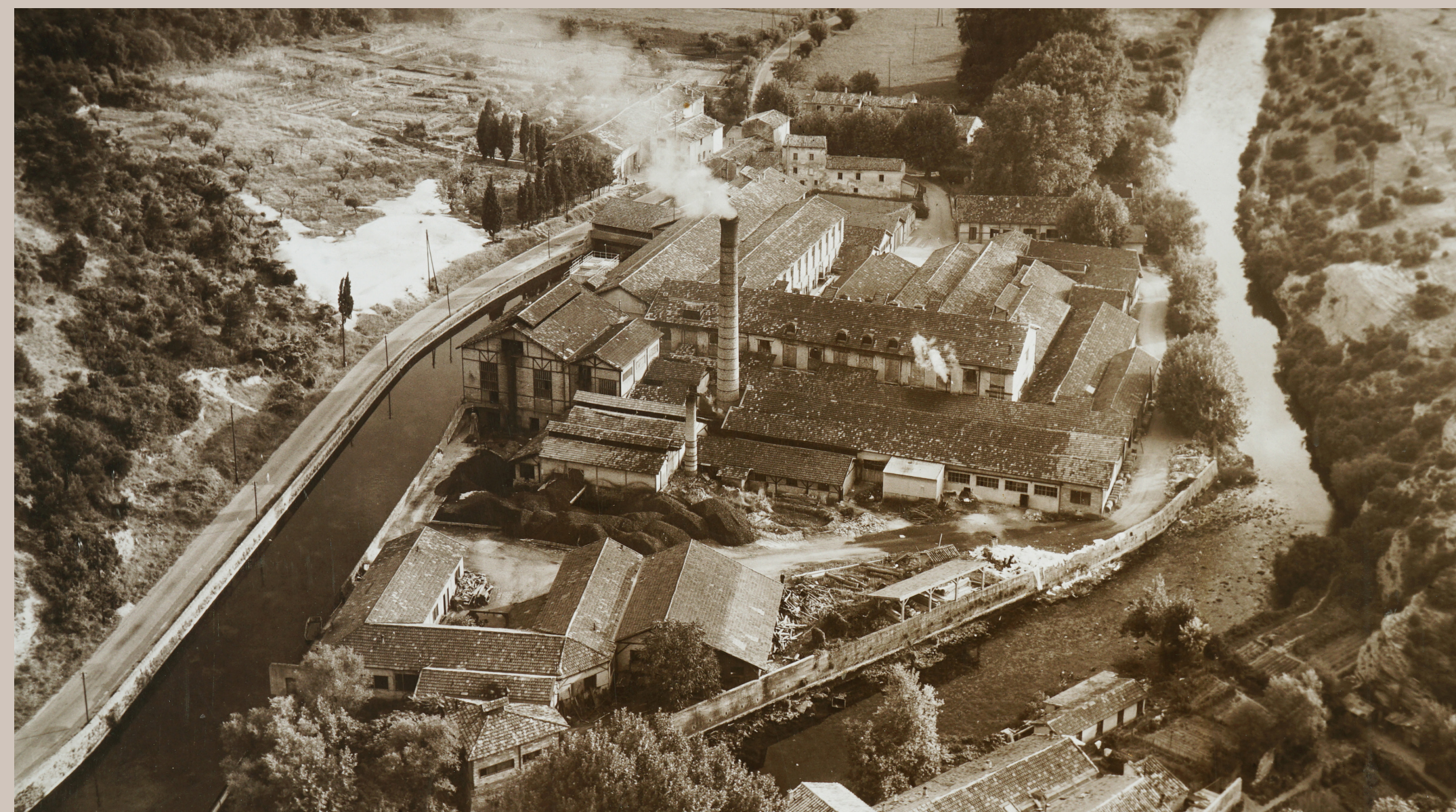
In 1008, the Bishop of Cavaillon gave a church in ruins, dedicated to St. Marcel, and other properties to the monastery that stood close to the current parish church in Fontaine-de-Vaucluse. The purpose of this donation was to establish a religious community of nuns in the Galas district, in this church close to the Sorgue, now destroyed.

The Roman St. Nicholas' chapel, at the foot of the ancient oppidum of Bondelon, is located in the town of Lagne, which borders Fontaine-de-Vaucluse. It dates from the 11th and 12th centuries and was built during a time when the worship of this saint was gaining popularity in Provence. This private chapel is closed to visitors.



## The aqueduct

The long-awaited plan to irrigate the plains of the County of Venaissin with water from the Durance finally went ahead in the 19th century with the establishment of the syndicate to build the Canal de Carpentras in 1853. This aqueduct, which carried the Canal de Carpentras over the Sorgue, was inaugurated on 12 July 1857 by Empress Eugénie. An imposing work of art, the aqueduct measures 24.50 m high and 159.20 m long, and is formed of 13 arches spanning nine metres. It is protected as an Historic Monument.



The industrial estate in Galas, 1946, photo taken by an American army reconnaissance plane.

## Agriculture and industry

The area traversed by the Sorgue was a farming area mostly planted with vines. The nuns were entitled to use the water from the river and built mills which were later sold. In the late 17th century, one of them was turned into a paper mill. In the early 19th century, there was also a madder factory, which transformed the roots of this herbaceous plant into a red dye. This factory was also converted to a paper mill in the late 1800s.



The inauguration of the Galas aqueduct in the presence of Empress Eugénie. Drawing by J.B. Laurens in the L'illustration magazine, dated 25 July 1857  
© Bibliothèque-musée Inguimbertaine, Carpentras